

Hi! CONTRAST DESIGN

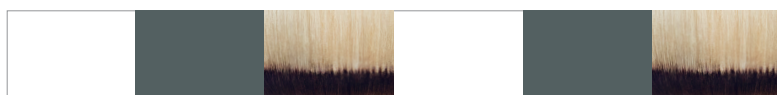
caradeco





HI! CONTRAST DESIGN

White × Dark Gray



caradeco



caradeco / Hi! CONTRAST DESIGN

Hi! CONTRAST DESIGN

Silver × Blue Black





HI! CONTRAST DESIGN

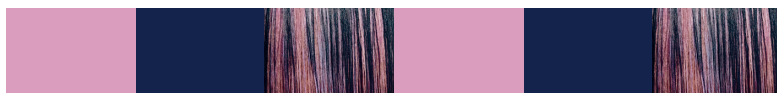
White × Pale Pink × Dark Gray





HI! CONTRAST DESIGN

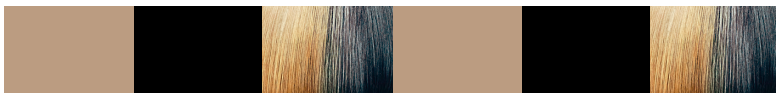
Pale Pink × Dark Navy





HI! CONTRAST DESIGN

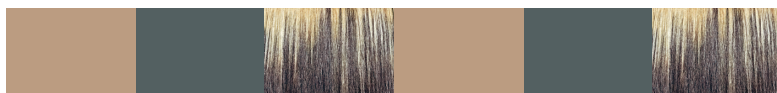
Pale Beige × *Blue Black*





Hi! CONTRAST DESIGN

Pale Beige × Dark Gray





HI! CONTRAST DESIGN

Beige × Blue Black





Hi! CONTRAST DESIGN

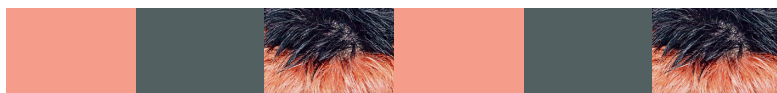
Beige × Dark Gray





HI! CONTRAST DESIGN

Pale Coral × Dark Gray



caradeco



caradeco / Hi! CONTRAST DESIGN

Hi! CONTRAST DESIGN

Pale Green × Dark Navy





HI! CONTRAST DESIGN

Pale Blue × Blue Black





Hi! CONTRAST DESIGN

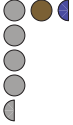




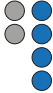


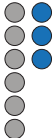

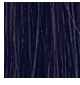


Pale Blue × Dark Navy



Light Color

	Pigment combination	Gray hair	9Level	Bleached once	Bleached twice
white / I white new color					
silve / I silver new color					
P beige / I pale beige					
beige / I beige					
P pink / I Pale pink new color					
P coral / I pale coral					
P green / I pale green					
P blue / I pale blue					

Dark Color

	Pigment combination	Gray hair	9 Level	Bleached once	Bleached twice
D gray / dk dark gray					
D navy / dk dark navy					
blue black / dk blue black					

Hair bundle photos are an image. Actual color may differ slightly due to printing conditions.

Precautions for use

- Be sure to read all the precautions on the inside of the box (cosmetic box) carefully and use the product correctly.
- People who have experienced a rash from hair color, bleaching or decolorizing agents in the past should NOT use this product.
- Oxidation hair dyes give rise to allergies more readily than other coloring agents and, depending on the person, may bring about allergic contact dermatitis severe enough to become a hindrance in daily life.
- Even people who have never experienced any problems with oxidative hair dye may develop allergic contact dermatitis as a result of continuous hair dyeing.
- In the case of allergy, even if symptoms disappear once, reuse may result in further outbreaks, and the symptoms may gradually become more severe and even lead to systemic symptoms.
- The risk of developing an allergy may increase when the number of times a person is exposed to oxidative hair dye increases.
- Be sure to conduct a skin allergy test (patch test) before each use of oxidative hair dye.
- If any abnormality is experienced from hair coloring, cease use and be sure to seek medical attention.



中野製薬株式会社
☎ 0120-075570
www.nakano-seiyaku.co.jp

